

Welcome to New Hope

10/31/21

Name.....

Are you a first-time visitor? Yes No

Address.....

Email.....

Phone.....

Who/what brought you to our church?

Please pray for.....

*I would like my prayer request to be read
by Pastors Only*

Tear off this panel and place in the offering plate.

Vision

All of the Bible in all of life.

Core Values

We worship God | We study the Word

We love people | We depend on prayer

Purpose

We desire to increase the number and maturity level of followers of Jesus Christ, first by sharing with them the good news about Jesus, second by enfoldng them into a fellowship of believers, and finally by teaching them how the Bible, God's Word, applies to all of life.

About Us

We are affiliated with the Orthodox Presbyterian Church which has been planting churches and preaching the Gospel of Jesus Christ since its inception in 1936. We believe God's infallible and life-changing Word and the historic Christian faith as summarized in the Westminster Confession of Faith and Catechisms.

This Week at New Hope

Sunday

8:30 am Sunday School
10:00am Worship Service
6:00 pm Evening Bible Study

Monday

6:30 pm Women's Bible Study

Tuesday

9:30 am Women's Bible Study

Wednesday

4:00pm BASIC
6:30pm Kids Club & Youth Group

Thursday

6:00 pm International Day of Prayer

Saturday

8:00 am Men of Iron

Next Sunday

8:30 am Sunday School
10:00am Worship Service
6:00 pm Evening Bible Study



New Hope Presbyterian Church

Sunday Worship

October 31, 2021

Welcome

Announcements

Time of Greeting

Call to Worship

1 Corinthians 5:7-8

Worship in Praise

Christ Our Hope In Life And Death

To The Lamb

I Will Delight

Hide Me In Your Holiness

Membership

Worship in Prayer

Worship in Giving

Worship in the Word

Exodus 20:13

Pastor Jim Ferguson

Communion

Response

What Kind Of Man Can Live In The World - #563

Benediction

6:00 PM - Evening Bible Study

Announcements

New to New Hope? We'd love to greet you!
Please visit the Welcome Desk as you exit the service.
If you would like to know more about who we are, please check out our website!

Men of Iron - Men's Bible Study

Saturday mornings at 8AM. Book: *"The Book That Made Your World: How The Bible Created the Soul of Western Civilization"* by Vishal Mangalwadi. If you would like to join please contact Dave Keller.

Women's Bible Study

Monday nights at 6:30pm and Tuesday mornings at 9:30am. Book: *"The Wisdom of God"* by Nancy Guthrie. Contact Jean Opelt or Janet Smies with any questions.

Kids Club & Youth Group

Children and Youth are invited to join us each Wednesday at 6:30pm from September-May! Come for a time of teaching from God's Word, games and much more. Kids Club is for children in grades K-5 and Youth Group is for grades 6-12.

Prayer Meeting

Join us on Thursdays from 6-7pm as we pray for needs within New Hope as well as for our New Hope faith missions and our OPC Home and Foreign missions.

Administrative Assistant Role

New Hope Office will be seeing some changes in the next few months as Liliana will be transitioning out of her role as Administrative Assistant. We would love to fill this role by the end of the year so if you, or someone you know, are interested you can find the job description out at the Welcome Center. If you have any questions please contact the church office.

Operation Christmas Child

Operation Christmas Child is here, and it's time to start packing boxes! Check out the Welcome Center for all of the items you need to be able to send your gifts to kids around the world. Bring your packed, and labeled boxes back to New Hope by November 14th! If you have any questions, please see Rehna Bernhardt or contact the church office.

Christmas Craft Fair

It's never too early to start thinking about crossing friends and family off your Christmas shopping list! Join us for a Christmas Craft Fair on November 19th and 20th. We currently are looking for vendors, so if you're looking for a way to share and sell what you make with others please sign up at nhopc.org. The cost to host a table is \$25. We are hoping that this can be a wonderful way to reach out to the community by sharing the gifts that God has given us. If you have any questions, please talk to Maddie Vasilev or Elizabeth Kirsteatter.

Persecuted Church Letter Drive

Did you know that we are doing a Persecuted Church Letter Drive for the month of November? Check out our information at the Welcome Center to learn how to write letters to persecuted believes around the world! If you have any questions, please talk to Jerusha Agen.

International Day of Payer

Sunday, November 7th is the International Day Of Prayer for persecuted Christians around the world. In the Narthex you can find free materials that will help guide you through prayer. Then, on November 4th at 6PM, there will be a free movie being shown in the sanctuary about the life of Richard Wurmbrand who founded the Voice of the Martyrs. This a 72-minute movie with brutal cruelty and is not suitable for children.

New Hope Presbyterian Church
2401 Deckner Ave.
Green Bay, WI 54302

Phone: (920) 468-8565
Website: www.nhopc.org
Email: office@nhopc.org

I'm Interested In...

- Talking with someone about what it means to trust in Jesus Christ
- Membership
- Baptism
- Small groups
- Meeting with a Pastor or an Elder
- Online giving
- Serving in Children's ministry
- Serving in Nursery
- Serving in Library
- Serving in Worship team
- Serving in Youth ministry
- Women's Study / Women's Fellowship
- Men's Study / Men's Fellowship
- Missions
- Serving as a Greeter or Usher
- Serving in Audio/Visual
- Serving in Kitchen
- Other.....

INTRODUCTION: The 2nd table of God’s moral Law, commandments 6-10, is about loving one’s neighbor as himself. Assuming all that precedes, God teaches at least 5 issues re: life as He created and intended it.

ISSUE 1: THE DEFINITION

- A. *“Murder”*
 - 1. Limited: u _____
 - 2. Inclusive: m _____
- B. Pt: Positive: P _____ /P _____

ISSUE 2: THE INCLUSION

- A. *“You shall not”*
 - 1. C _____ life: u _____
 - 2. F _____ life: u _____
- B. Pt: Positive: B _____

ISSUE 3: THE EXPANSION

- A. *“Anyone who hates... is a murderer”* (1 John 3.15)
 - 1. H _____ at in context
 - 2. Is _____
- B. Pt: Positive: P _____ /S _____

ISSUE 4: THE REGARD

- A. *“Shall not murder”*
 - 1. P _____
 - 2. C _____
- B. Pt: Positive: H _____

ISSUE 5: THE REASON

- A. *“ _____ ”*
 - 1. U _____
 - 2. U _____
 - 3. U _____
 - 4. U _____
- B. Pt: Positive: H _____

CONCLUSION: GOD’S LAW IS LIFE

- A. P _____ life
- B. C _____ /r _____
- C. L _____ your neighbor’s life

Christ Our Hope In Life And Death

(based on the recording by Keith & Kristyn Getty)

Words and Music by
Keith Getty, Matt Boswell, Jordan Kauflin,
and Matthew Merker, Matt Papa

♩ = 76

INTRO

D⁵

G²(no3)

The Intro section consists of two staves of music. The treble staff features a series of chords and eighth notes, while the bass staff provides a steady eighth-note accompaniment. The key signature is two sharps (D major) and the time signature is 3/4.

VERSE 1 & 2

4

D

D^{sus}

D

D^{sus}

D

Bm⁷
(2nd Verse)

A⁽⁴⁾

A^{sus}

Verse 1 & 2 musical notation with lyrics and guitar chords. The treble staff contains the melody and lyrics, while the bass staff provides accompaniment. Chords are indicated above the staff.

1. What is our hope in life and death? Christ a - lone, Christ a - lone. What is our
 (2. What truth can) calm the trou-bled soul? God is good, God is good. Where is His

9

D

A/C#

Bm

G

D/A

A

D

Continuation of Verse 1 & 2 musical notation with lyrics and guitar chords. The treble staff contains the melody and lyrics, while the bass staff provides accompaniment. Chords are indicated above the staff.

on - ly con - fi - dence? That our souls to Him be - long. Who holds our
 grace and good - ness known? In our great Re - deem - er's blood. Who holds our

CCLI Song # 7147502

© 2020 Getty Music Hymns and Songs | Getty Music Publishing | Jordan Kauflin Music | Love Your Enemies Publishing | Matthew Merker Music
 | Messenger Hymns

For use solely with the SongSelect® Terms of Use. All rights reserved. www.ccli.com

CCLI License # 153437

13 F#m Bm Em⁷ D/F#

days with - in His hand? What comes, a - part from His com -
 faith when fears a - rise? Who stands a - bove the storm - y

16 G D/A A Bm G

-mand? And what will keep us to the end? The love of
 trial? Who sends the waves that bring us nigh un - to the

2nd time to Coda ⊕

CHORUS 1a

19 D/A A D D^{sus} D Bm G D

Christ, in which we stand. O sing ha - le - lu - jah! Our
 shore, the rock of

24 A/C# Bm D/F# G D/F# G D/F# A

hope springs e - ter - nal; O sing ha - le - lu - jah! Now and ev - er we con -

TURNAROUND

29 G Bm⁷ A D⁵

-fess Christ our hope in life and death.

32 G^{2(no3)} D.S. al Coda

What truth can

⊕ Coda

CHORUS 1b

35 D Bm G D A/C# A Bm D/F#

Christ? O sing ha - le - lu - jah! Our hope springs e - ter - nal; O

40 G D/F# G D/F# A G Bm⁷ A

sing ha - le - lu - jah! Now and ev - er we con - fess Christ our hope in life and

TURNAROUND

45

D⁵

G^{2(no3)}

death. Un - to the

VERSE 3

49

D

D^{sus}

D

D^{sus}

D

A⁽⁴⁾

A^{sus}

D

A/C#

grave, what will we sing? "Christ, He lives; Christ, He lives!" And what re - ward will heav - en

54

Bm

G

D/A

A

D

F#m

Bm

bring? Ev - er - last - ing life with Him. There we will rise to meet the Lord, Then sin and

59

Em⁷

D/F#

G

D/A

A#°

Bm

G

D/A

A

death will be de - stroyed, And we will feast in end - less joy, When Christ is ours for - ev - er -

CHORUS 1c

64 D D/C# Bm Bm/A N.C. D A/C# A

-more. O sing ha - le - lu - jah! Our hope springs e -

69 Bm D/F# G D/F# G D/F# A G

-ter - nal; O sing ha - le - lu - jah! Now and ev - er we con - fess Christ our

CHORUS 1d

74 Bm⁷ A D D/C# Bm Bm/A G D D/E D/F#

hope in life and death. O sing ha - le - lu - jah! Our

78 A A/B A/C# Bm D/F# G D/F# G D/F# A

hope springs e - ter - nal; O sing ha - le - lu - jah! Now and ev - er we con -

83

G Bm⁷ A G^{2(no3)} TAG D/A D/F#

-fess Christ our hope in life and death. Now and ev - er we con -

87

G Bm⁷ A D D^{sus} D

-fess Christ our hope in life and death.

To The Lamb

Words and Music by
Shannon Wexelberg

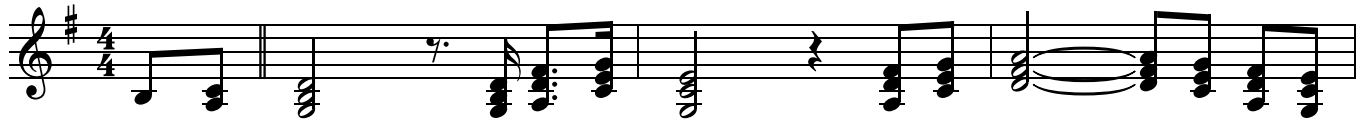
♩ = 66

G²

D/G

C/G

D/G



1. To the Lamb up-on the throne, be the praise _____ for - ev - er -
2. Son of God, Son of Man, You be - came _____ the spot-less

4

G²

G/B

C

B⁷/D#

B⁷



-more. Be the pow - er _____ and the glo - ry, be the
Lamb; Suf - fring for _____ me, _____ You showed me mer - cy, now You

7

G/D

G/B

C

Am⁷

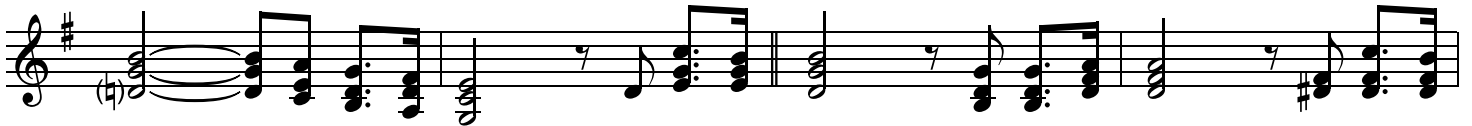
C/D

G

Em⁷

D/F#

B/D#



strength _____ and maj - es - ty. We wor-ship Thee, O Lamb of God, the Liv - ing
reign _____ in maj - es - ty.

11

Em

Em/D

Am⁷

G/B

C

C/D

G

Em⁷



Word. We lift up Your name _____ and wor - ship Thee. An - cient of

14

D

B⁷

Em

A⁷/C#

Am⁷

G/B

C/D

G



Days, we give You praise, _____ O _____ Lamb up - on _____ the throne.

CCLI Song # 839610

© 1993 Christ For The Nations Music | Universal Music - Brentwood Benson Publishing
For use solely with the SongSelect® Terms of Use. All rights reserved. www.ccli.com
CCLI License # 153437

I Will Delight

Words and Music by
Walt Harrah and
John Andrew Schreiner

♩=98

VERSE

G D/F# Em⁷ Bm⁷ C

I will de-light in the law of the Lord, I will med - i - tate day and night.

4

G D/F# Em⁷ Bm⁷ C D

Then like a tree firm - ly plant - ed I'll be, ground - ed in Your Word.

CHORUS

8 G D C/D D Am/G G

Bless - ed is the one who fol - lows the

12 D/G G D C D

way of the Lord, bless - ed is the

15 1. 2.
G Bm⁷ C² G

one. one.

Hide Me In Your Holiness

Words and Music by
Steve Ragsdale

♩=78

VERSE

D D²/F# D G/B A^{sus} A G/B



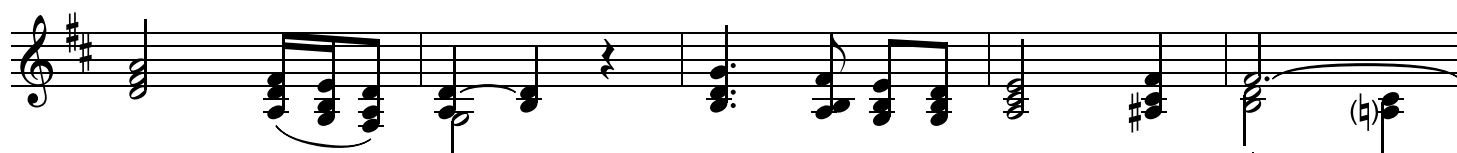
1. Hide me, Lord, in Your ho - li - ness, ev - 'ry
2. Take my life an of - fer - ing; All of

6 A²/C# D^{sus} D G A/G



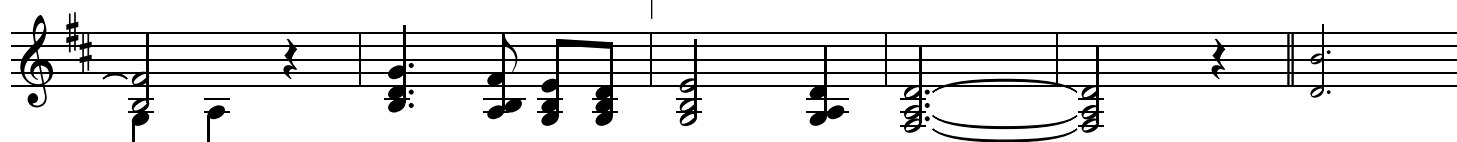
sin I now con - fess. Praise to You, for -
me to You I bring. Praise to You, O

11 D²/F# G² G Em⁷ A F#/A# Bm F#m/A



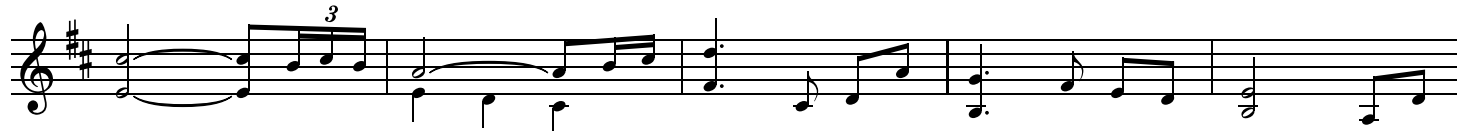
-giv - ing Lord. Hide me in Your ho - li - ness.
spot - less Lamb. Hide me in Your ho - li - ness.

16 Gmaj⁷ G⁶ Em⁷ 1. Em/A A^{7sus} D D/F# INSTR. G



Hide me in Your ho - li - ness.

22 A/G D/F# Bm⁷ Em⁷ Em/A A^{7sus}



27 D G²/D 2. A⁷ A^{7sus} D CHORUS G

ho - li - ness. _____ Hide _____

34 A/G D/F# B^{9sus} Bm G A/G F#m⁷

me, hide me, _____ hide _____ me, Lord.

40 Am⁷/D G A/G D/F# B^{9sus} Bm Em⁷

Won't You hide _____ me, hide me, _____ hide me in Your

46 A F#/A# Bm F#m/A Gmaj⁷ G⁶ Em⁷ Em/A A^{7sus}

ho - li - ness. _____ Hide me in Your ho - li -

51 D G²/D D² D^{2sus} D²

-ness. _____ In Your ho - li - ness.

What Kind of Man Can Live in the World

LORD, who may dwell in your sanctuary? Who may live on your holy hill? Ps. 15:1

Unison

1. What kind of man can live in the world where God lives?
 2. What kind of man can speak in the world where God speaks?
 3. What kind of man can rule in the world where God rules?

One who in ac - tion is right and whose con - duct is blame-less;
 One who can say what is true but a - void speak-ing slan - der;
 One who will swear to his hurt but a - bide by his prom - ise;

one who can speak the truth in his heart at all times;
 one who will work the good of his friends and neigh - bors;
 one who will use his wealth to re - lieve the need - y;

one who o - obeys all that God in his love has taught us.
 one who sup - ports men of God in con - tempt of e - vil.
 he who ac - com - plish - es this is se - cure for - ev - er.