

Announcements

New to New Hope? We'd love to greet you!
Please visit the Welcome Desk as you exit the service.
If you would like to know more about who we are, please check out our website!

Men of Iron - Men’s Bible Study

Saturday mornings at 8AM starting November 20th. Book: *Fault Lines* by Voddie T. Baucham Jr. If you would like to join please contact Dave Keller or Josh Agen.

Women’s Bible Study

Women’s Bible study for the new year will begin January 17th /18th. We’ll be studying the books of First and Second Peter for 10 weeks with a study guide that will cost \$10. Please contact Janet Smies or Jean Opelt for more information.

Kids Club & Youth Group

Children and Youth are invited to join us each Wednesday at 6:30pm from September-May! Come for a time of teaching from God’s Word, games and much more. Kids Club is for children in grades K-5 and Youth Group is for grades 6-12.

Prayer Meeting

Join us on Thursdays from 6-7pm as we pray for needs within New Hope as well as for our New Hope faith missions and our OPC Home and Foreign missions.

Christmas Program

Our annual Christmas Program and Cookie Social is coming up on Sunday, December 12th at 6pm. Invite your friends and family to see this children’s program as well as listen to our Christmas Choir! We also need people to bring dessert for the social afterwards, so please sign up at the welcome center if you are willing to help in that way.

Christmas In The Library

Join us today in the Library after the worship service for our annual Christmas Open House. Enjoy a delicious Christmas cookie while you browse through the many Christmas books, DVDs, and CDs. Library volunteers will be happy to help if you have any questions.

New Hope Treasurer Position

After 33 years of faithful service as New Hope’s treasurer, Dave Vander Ploeg will be retiring from this position in early 2022. As a result, the New Hope treasurer position will soon be vacant and will need to be filled. The goal is to identify a replacement as soon as possible so the new treasurer can train with Dave during the first half of 2022. A detailed job description is available at the Welcome desk or can be obtained by contacting the church office. If you are interested and have questions about the position please feel free to contact Dave Vander Ploeg at 920-202-4213 or email at vanderploeg.dave@gmail.com.

Perspectives 2022

Perspectives is back! Join us starting in January as we experience God's heart for all peoples and encounter the momentum of the World Christian Movement. Perspectives will open the eyes of your heart with fresh knowledge and understanding of God's unchanging purposes and why they're relevant to your life. In the course of 15 weeks, you will hear from 15 different instructors as they teach about God's kingdom and His glory. Find out more at perspectives.org, or talk to Jeff Hollenbeck or Dunc Pfantz.

New Administrative Assistant

We are so excited to welcome Rachel Hollenbeck on board as New Hope’s new Administrative Assistant! Rachel will spend some time in training through December and Liliana will transition out by the end of the year.

New Hope Presbyterian Church
2401 Deckner Ave.
Green Bay, WI 54302
Phone: (920) 468-8565
Website: www.nhopc.org
Email: office@nhopc.org

I’m Interested In...

- ☐ Talking with someone about what it means to trust in Jesus Christ
- ☐ Membership
- ☐ Baptism
- ☐ Small groups
- ☐ Meeting with a Pastor or an Elder
- ☐ Online giving
- ☐ Serving in Children’s ministry
- ☐ Serving in Nursery
- ☐ Serving in Library
- ☐ Serving in Worship team
- ☐ Serving in Youth ministry
- ☐ Women’s Study / Women’s Fellowship
- ☐ Men’s Study / Men’s Fellowship
- ☐ Missions
- ☐ Serving as a Greeter or Usher
- ☐ Serving in Audio/Visual
- ☐ Serving in Kitchen
- ☐ Other.....

INTRODUCTION: The 2nd table of God’s moral Law, commandments 6-10, is about loving one’s neighbor as himself. Assuming all that precedes, God teaches at least 5 issues re: life as He created and intended it.

ISSUE 1: THE DEFINITION

- A. “Murder”
 - 1. Limited: u_____
 - 2. Inclusive: m_____
- B. Pt: Positive: P_____ /P_____

ISSUE 2: THE INCLUSION

- A. “You shall not”
 - 1. C_____ life: u_____
 - 2. F_____ life: u_____
- B. Pt: Positive: B_____

ISSUE 3: THE EXPANSION

- A. “Anyone who hates... is a murderer” (1 John 3.15)
 - 1. H_____ at in context
 - 2. Is_____
- B. Pt: Positive: P_____ /S_____

ISSUE 4: THE REGARD

- A. “Shall not murder”
 - 1. P_____
 - 2. C_____
- B. Pt: Positive: H_____

ISSUE 5: THE REASON

- A. “_____”
 - 1. U_____
 - 2. U_____
 - 3. U_____
 - 4. U_____
- B. Pt: Positive: H_____

CONCLUSION: GOD’S LAW IS LIFE

- A. P_____ life
- B. C_____ /r_____
- C. L_____ your neighbor’s life

Come Behold The Wondrous Mystery

Words and Music by
Matt Boswell, Matt Papa
and Michael Bleecker

$\text{♩} = 77$

INTRO

Chords: F, B \flat^2 , Dm 7

VERSE 1 & 2

(B \flat)

Chords: C sus , C, C 7sus , F, B \flat /F, F, C

4

1. Come be - hold the won-drous mys - try, in the dawn - ing of the King. He the
(2. Come be) - hold the won-drous mys - try, He the per - fect Son of Man. In His

Chords: Dm 7 , Dm 7 /C, B \flat^2 , C, F, F/A, B \flat^2

9

theme of heav-en's prais - es, robed in frail hu - man - i - ty. In our long - ing, in our
liv - ing, in His suf - f'ring, nev - er trace, nor stain of sin. See the true and bet - ter

CCLI Song # 7026028

© 2012 Bleecker Publishing | Getty Music Hymns and Songs | Getty Music Publishing | Love Your Enemies Publishing | McKinney Music, Inc.

For use solely with the SongSelect® Terms of Use. All rights reserved. www.ccli.com

CCLI License # 153437

14 F/A F F/E Dm⁷ Dm⁷/C B \flat ² F/C B \flat ²/D

dark -ness, now the light of life has come. Look to Christ, who con - de - scend - ed, took on
Ad - am, come to save the hell-bound man. Christ, the great and sure ful - fill - ment of the

19 B \flat ² C^{sus} F B \flat ² Dm⁷ 1. C

TURNAROUND

flesh to ran - som us. 2. Come be -
law, in Him we stand.

24 2. C **VERSE 3** Dm B \flat /D Dm C/D

3. Come be - hold the won-drous mys - t'ry, Christ the Lord up - on the tree. In the

29 Dm Dm/C B \flat ² C F F/A B \flat ²

stead of ru - ined sin - ners hangs the Lamb in vic - to - ry. See the price of our re -

34 F/A F F/E Dm⁷ Dm⁷/C B^b2 F/C B^b2/D

-demp-tion, see the Fa-ther's plan un-fold. Bring-ing man-y sons to glo-ry; grace un-

39 B^b2 C^{sus} **TURNAROUND** F B^b2 Dm⁷ C

-meas-ured, love un-told. 4. Come be-

44 **VERSE 4** F B^b2/D F C⁽⁴⁾/F Dm⁷ Dm⁷/C

-hold the won-drous mys-t'ry, slain by death, the God of life. But no grave could e'er re-

49 B^b2 C F F/A B^b2 F/A F F/E

-strain Him. Praise the Lord, He is a-live! What a fore-taste of de-liv-rance, how un-

54 Dm⁷ Dm⁷/C B \flat ² F/C B \flat ²/D B \flat ² C^{sus}

-wa - ver-ing our hope. Christ in pow - er res - ur - rect - ed, as we will be when He

ENDING

59 F F/A B \flat ² F/A F F/E Dm⁷ Dm⁷/C B \flat ²

comes. What a fore - taste of de - liv - 'rance, how un - wa - ver-ing our hope.

64 F/C B \flat ²/D B \flat ² C^{sus}

Christ in pow - er res - ur - rect - ed, as we will be when He

OUTRO

68 F B \flat ² Dm⁷ C^{sus} C^{7sus} F

comes.

Come, Thou Long-Expected Jesus

196

Waiting for the consolation of Israel. Luke 2:25

1. Come, thou long - ex - pect - ed Je - sus, born to set thy peo - ple free;
 2. Joy to those who long to see thee, Day-spring from on high, ap - pear;
 3. Come to earth to taste our sad - ness, he whose glo - ries knew no end;
 4. Born thy peo - ple to de - liv - er, born a child and yet a king,

from our fears and sins re - lease us; let us find our rest in thee.
 come, thou prom - ised Rod of Jes - se, of thy birth we long to hear!
 by his life he brings us glad - ness, our Re - deem - er, Shep - herd, Friend.
 born to reign in us for - ev - er, now thy gra - cious king - dom bring.

Is - rael's strength and con - so - la - tion, hope of all the earth thou art,
 O'er the hills the an - gels sing - ing news, glad tid - ings of a birth:
 Leav - ing rich - es with - out num - ber, born with - in a cat - tle stall;
 By thine own e - ter - nal Spir - it rule in all our hearts a - lone;

dear De - sire of ev - 'ry na - tion, joy of ev - 'ry long - ing heart.
 "Go to him, your prais - es bring - ing; Christ the Lord has come to earth."
 this the ev - er - last - ing won - der, Christ was born the Lord of all.
 by thine all - suf - fi - cient mer - it, raise us to thy glo - rious throne.

Unison Scripture Reading Matthew 1:22-23

All this took place to fulfill what the Lord had said through the prophet:
"The virgin will conceive and give birth to a son, and they will call him
Immanuel" - which means "God with us".

Emmanuel

Words and Music by
Bob McGee

♩ = 80

C/E

F

F/E

Dm⁷

G⁷

C Gm⁶/B^b

A⁷

A⁷/C[#]



Em - man - u - el, _____ Em - man - u - el, _____ His name is

6

Dm Dm/C

G⁷/B

G

C

E⁷

F

F/E



called _____ Em - man - u - el: _____ God with us, _____

11

Dm⁷

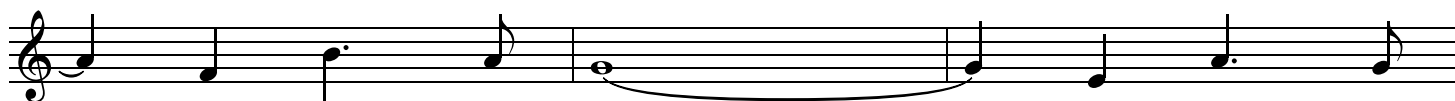
G⁷

C

Gm⁶/B^b

A⁷

A⁷/C[#]



_____ re - vealed in us! _____ His name is

14

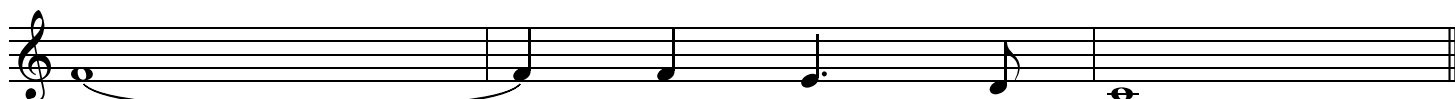
Dm

Dm/C

G⁷/B

G

C



called _____ Em - man - u - el.

CCLI Song # 12949

© 1976 C.A. Music

For use solely with the SongSelect® Terms of Use. All rights reserved. www.ccli.com

CCLI License # 153437

Jesus Name Above All Names

Words and Music by
Naida Hearn

♩ = 54

VERSE

F Dm⁷ Gm⁷

1. Je - sus, name a - bove all names, beau - ti - ful Sav - ior,
 2. Je - sus, lov - ing Shep - herd, Vine of the branch - es,
 3. Praise him, Lord a - bove all lords, King a - bove all kings,

6 Gm⁷/C Gm⁷/B \flat Am⁷ B \flat F/C C F²

glo - ri - ous Lord. Em - man - u - el, God is
 Son of God; Prince of Peace, Won - der - ful
 God's on - ly Son. The Prince of Peace, who by his

11 Dm⁷ G^{7sus} Gm⁷ Gm⁷/C F/C C F

with us, bless - ed Re - deem - er, Liv - ing Word.
 Coun - se - lor, Lord of the u - ni - verse, Light of the world.
 Spir - it comes to live in us, Mas - ter and Friend.

CCLI Song # 21291

© 1974, 1978 Universal Music - Brentwood Benson Publishing
 For use solely with the SongSelect® Terms of Use. All rights reserved. www.ccli.com
 CCLI License # 153437

Ancient Words

Words and Music by
Lynn DeShazo

♩ = 63

VERSE 1

E B E A

1. Ho - ly words long pre - served for our walk in this world;

4

B C#m B/D# E E/G# F#m/A E/B B

They re-sound with God's own heart, O, let the an - cient words im -

8

E E^{sus} E B E



VERSE 2, 3 & 4

-part; 2. Words of life, words of hope, give us strength,
(3.) words of our faith hand - ed down
(4.) blood stains each page, they have died

12 A B C#m B/D# E E/G#

help us cope; In this world wher - e'er we roam, an - cient
to this age, came to us through sac - ri - fice; O, heed the
for this faith; Hear them cry through the years; Heed these

16 F#m/A E/B B E CHORUS E E/G# B

words will guide us home. An-cient words, ev - er true, chang-ing
faith - ful words of Christ.
words and hold them dear.

21 F#m E/G# A B C#m B/D# E

me, chang-ing you; We have come with o - pen hearts, O let the

25 F#m/A E/B B 1. E A/E E E^{SUS} 2, 3. E A/E E E/G# CHORUS

an-cient words im - part. 3. Ho-ly part. An-cient words, ev - er

30 B F#m E/G# A B

true, chang - ing me, chang - ing you; We have

33 C#m B/D# E F#m/A E/B B 2nd time to Coda ⊕

come with o - pen hearts, O let the an - cient words im -

36 INSTRUMENTAL E B/D# E E/G#

-part.

38 A E/B B E A/E E E^{sus} D.S. al Coda

4. Mar - tyr's

41 \oplus Coda E

ENDING C#m B/D# E E/G#

part. We have come with o - pen hearts, O let the

45 F#m/A E/B B C#m B F#m/A E/B B E

an-cient words im - part. O let the an-cient words im - part.