

Announcements

New to New Hope? We'd love to greet you!
Please visit the Welcome Desk as you exit the service.
If you would like to know more about who we are, please check out our website!

Men of Iron

Join us on Saturday mornings at 8AM as we study the book *Knowing God*, by J.I. Packer. Join us for a time of study and fellowship. Contact Josh Agen if you have questions or are interested in joining.

Women’s Bible Study

Join us on Monday nights (6:30) or Tuesday mornings (9:30) as we study the book of Habakkuk in detail over the summer months. Contact Jean Opelt if you have any questions or would like to join.

Prayer Meeting

Join us on Thursdays from 6-7pm as we pray for needs within New Hope as well as for our New Hope faith missions and our OPC Home and Foreign missions. Contact Ed Keating or Ruth Vollrath if you have any questions or would like to join.

VBS

VBS is less than a month away! So far we have 50 kids registered, but we are looking for more. In your mailboxes and at the Welcome Desk you will find postcards to invite families to join us. You can register online at the link on the postcard or by going to nhopc.org.
~ We are always looking for more help from teens and adults. Contact Krystal Wettengel, any of the VBS leaders, or the church office to volunteer.
~ Lastly, please be in prayer for us as we get closer to VBS. Pray for the leaders, volunteers, and children and that VBS will be a fun week of learning and growing in our relationships with Christ.

Preble Pizza Update

Preble Pizza Spring 2022 was a huge success! During the two weeks that the event was hosted New Hope had the privilege of visiting with and serving 251 students. We received more prayer requests than ever before and the kids are already looking forward to the event in the future. New Hope would like to continue the ministry in the fall. Contact Patti Weinstein for more details or to get involved.

Colson Fellows -

The Colson Fellows program still has several spots available for the 2022-23 class and registration has been extended until July 1st. If you are looking for a way to engage with modern culture in a biblical way this is the class for you. Visit the missions page of nhopc.org to register or talk to Ed Keating and Ruth Vollrath for more details.

All Church Gathering -

Everyone is invited to the Van Noord’s on June 25th (this Saturday) from 4 - 8 pm for An All Church Gathering with food and a time of fellowship. Grilling will start at 5 but you are welcome to come at any time. Talk to Jared or Kristen for more details.

Library Summer Reading Program -

Adults, teens, and children...sign up today to join the Reading Down on the Farm program at the New Hope Library. Read for fun and prizes awarded at the end of summer. Sign up today in the library or ask a library worker if you have any questions.

Movie Night -

Join New Hope on June 27th as we present Mary Poppins (1964) in the parking lot. For just \$1 you can enjoy the movie, dinner, and free popcorn. The event will start at 5 pm and the movie will begin at 6 pm. Contact Rebecca Schmitz for more details.

New Hope Presbyterian Church
2401 Deckner Ave.
Green Bay, WI 54302

Phone: (920) 468-8565
Website: www.nhopc.org
Email: office@nhopc.org

I’m Interested In...

- ☐ Talking with someone about what it means to trust in Jesus Christ
- ☐ Membership
- ☐ Baptism
- ☐ Small groups
- ☐ Meeting with a Pastor or an Elder
- ☐ Online giving
- ☐ Serving in Children’s ministry
- ☐ Serving in Nursery
- ☐ Serving in Library
- ☐ Serving in Worship team
- ☐ Serving in Youth ministry
- ☐ Women’s Study / Women’s Fellowship
- ☐ Men’s Study / Men’s Fellowship
- ☐ Missions
- ☐ Serving as a Greeter or Usher
- ☐ Serving in Audio/Visual
- ☐ Serving in Kitchen/as Kitchen Coordinator
- ☐ Other.....



Introduction: Often, we struggle in life. It could be a work issue, family struggles, singleness, financial, or even our health. When we have these struggles, it can leave us feeling lonely or worse, alone. When we do, God can feel distant and withdrawn. What do we do? How do we restore our confidence in God? We find the answers here in Psalm 42. It is in our prayers we find the answer.

1. The Psalmist sings of his Drought (v1-5)

- a.
- b.
- c.
- d.

2. The Psalmist sings of his Drowning (v6-11)

- a.
- b.
- c.
- d.

3. The Chorus – our response (v5&11)

- a. The Reality Check
- b. Hope in God

I Will Call Upon The Lord

Words and Music by
Michael O'Shields

♩ = 108

INTRO

C

F/C

Cmaj⁷

F/C

C

F/C

Musical notation for the Intro section, measures 1-6. The music is in 4/4 time. The treble staff features a melody of eighth and quarter notes, while the bass staff provides a harmonic accompaniment with chords and moving lines.

VERSE 1a

4

Cmaj⁷

F/C

C

F/C

Cmaj⁷

F/C

Musical notation for Verse 1a, measures 4-6. The melody in the treble staff includes a repeat sign in measure 5. The lyrics "I will call up-on the" are aligned with the melody in measure 6.

I will call up-on the

I will call up-on the Lord,

7

C

F/C

Cmaj⁷

F/C

C

F/C

Musical notation for Verse 1a, measures 7-9. The melody in the treble staff includes a whole note in measure 8. The lyrics "Lord, who is wor - thy to be praised." are aligned with the melody in measure 8.

Lord,

who is wor - thy to be praised.

who is wor - thy to be praised.

So shall I be

10 Cmaj⁷ F/C C F/C 1. Cmaj⁷ F/C

So shall I be saved from my en - e-mies. I will call up-on the

saved from my en - e-mies.

13 C F/G 2. Cmaj⁷ F/C C F/G CHORUS 1a C

Lord. I will call up-on the Lord. The Lord liv-eth and

17 F C F C G G⁷

bless-ed be my Rock. Let the God of my sal - va - tion be ex - alt - ed. The

20 C F C F C

Lord liv-eth and bless-ed be my Rock. Let the God of my sal - va - tion be ex -

CHORUS 1a

23 G⁷ C F/C C C

-alt - ed. The Lord liv - eth and

26 F C F C G G⁷

bless-ed be my Rock. Let the God of my sal - va-tion be ex - alt - ed. The

Bless-ed be my Rock. Oh, be ex-alt - ed.

29 C F F F C

Lord liv - eth and bless-ed be my Rock. Let the God of my sal - va-tion be ex -

The Lord liv - eth. Bless-ed be my Rock.

VERSE 1a

32 G⁷ C F/G C F/C Cmaj⁷ F/C

-alt - ed. I will call up-on the Lord

ex - alt - ed. I will call up-on the

36 C F/C Cmaj⁷ F/C C F/C

who is wor - thy to be praised. So shall I be

Lord who is wor - thy to be praised.

39 Cmaj⁷ F/C C F/C Cmaj⁷ F/C

saved from my en - e-mies. I will call up - on the

So shall I be saved from my en - e-mies. I will call up - on the

VERSE 1b

42 C A^b7 D^b G^b/D^b D^bmaj⁷ G^b/D^b

Lord. I will call up - on the

Lord. I will call up - on the Lord

45 D^b G^b/D^b D^bmaj⁷ G^b/D^b D^b G^b/D^b

Lord who is wor - thy to be praised. So shall I be

who is wor - thy to be praised. So shall I be

48 $D\flat maj^7$ $G\flat/D\flat$ $D\flat$ $G\flat/D\flat$ $D\flat maj^7$ $G\flat/D\flat$

So shall I be saved from my en - e-mies. I will call up-on the
saved from my en - e-mies.

51 $D\flat$ $G\flat/A\flat$ $D\flat$ $G\flat$ $D\flat$

CHORUS 1b

Lord. The Lord liv - eth and bless - ed be my Rock. Let the God

54 $G\flat$ $D\flat$ $A\flat$ $A\flat^7$ $D\flat$

of my sal - va - tion be ex - alt - ed. The Lord liv - eth and

57 $G\flat$ $D\flat$ $G\flat$ $D\flat$ $A\flat^7$

bless - ed be my Rock. Let the God of my sal - va - tion be ex - alt

60

1. D \flat G \flat /D \flat D \flat 2. N.C. CHORUS 1c D

-ed. The - ed. The Lord liv - eth, and

63

G D G D A A⁷

bless - ed be my Rock. Let the God of my sal - va - tion be ex - alt - ed. The

66

D G D G D

Lord liv - eth, and bless - ed be my Rock. Let the God of my sal - va - tion be ex -

69

A⁷ D G/D D G/D D

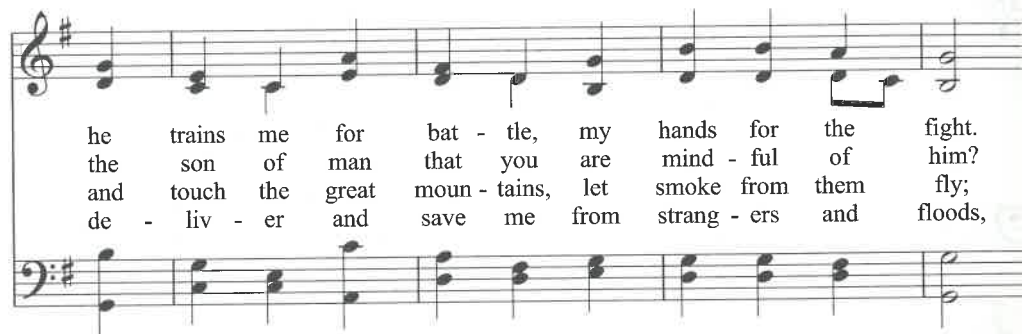
-alt - ed! ed!

144B

O Blest Be the LORD God



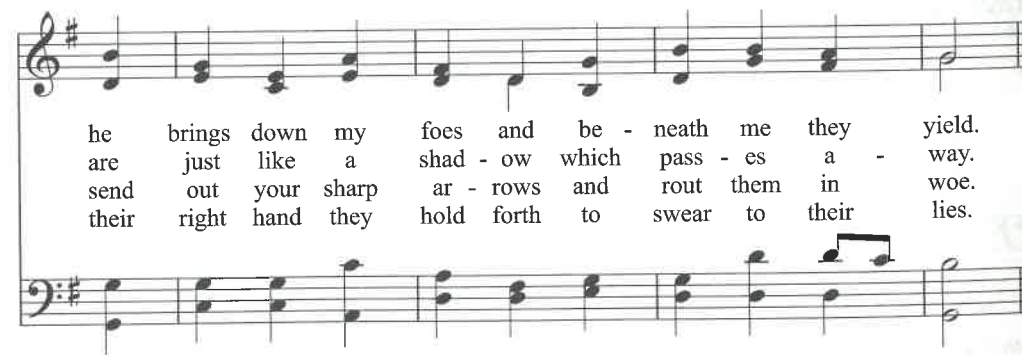
1. ¹O blest be the LORD God, my rock and my might;
 2. ³O LORD, what is man that you rec - og - nize him,
 3. ⁵Bend low your arched heav - ens, come, LORD, from on high,
 4. ⁷O LORD, stretch your hand from the heav - ens a - bove;



he trains me for bat - tle, my hands for the fight.
 the son of man that you are mind - ful of him?
 and touch the great moun - tains, let smoke from them fly;
 de - liv - er and save me from strang - ers and floods,



²My for - tress, de - liv - 'rer, my ref - uge and shield,
⁴For man is but va - por, his brief earth - ly days
⁶flash forth your fierce light - nings and scat - ter the foe,
⁸their tongues speak so false - ly and truth they de - spise,



he brings down my foes and be - neath me they yield.
 are just like a shad - ow which pass - es a - way.
 send out your sharp ar - rows and rout them in woe.
 their right hand they hold forth to swear to their lies.



5. ⁹A new song to you, O my God, I will sing,
 6. ¹¹O LORD, set me free and de-liv-er-ance send,
 7. ¹²Our sons be like plants that are full grown in youth,
 8. ¹⁴Our cat-tle be heav-y with young in the womb,

and of-fer my praise on a harp of ten strings;
 and res-cue me now from the for-eign-er's hand.
 our daugh-ters like pil-lars for pal-ac-es hewn.
 and give birth to off-spring, es-cap-ing all doom.

¹⁰you give kings their tri-umph; your hand has, O LORD,
 Their mouths ut-ter lies, and with pre-tense they speak;
¹³Our grain bins be filled, as our crops give their yield;
 No cries of dis-tress from the peo-ple be heard.

kept Da-vid, your ser-vant, from hurt by the sword.
 their right hand of false-hood they raise in de-ceit.
 our flocks by the thou-sands in the field.
¹⁵How bless-ed the peo-ple whose God is the LORD!

Cornerstone

Words by
Jonas Myrin, Reuben Morgan,
Eric Liljero and Edward Mote

Music by
Jonas Myrin,
Reuben Morgan, Eric Liljero
and William Batchelder Bradbury

♩ = 71

INTRO

A

F#m



4

D

E



VERSE 1

A

D



1. My hope is built on noth - ing less, than Je - sus' blood and

10

E

F#m

F#m/E



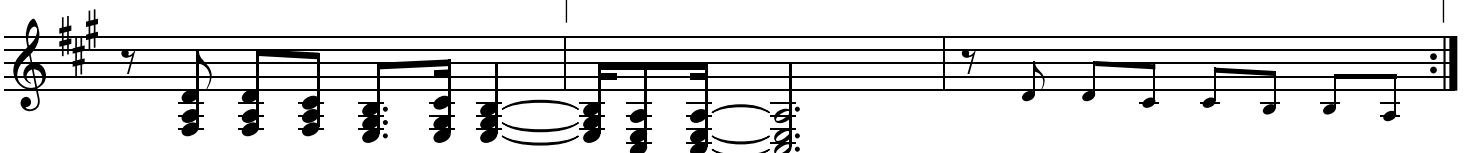
right - eous - ness. — I dare not trust the sweet - est frame,

13

D

E

1.
A



but whol - ly trust in Je - sus' Name. _

CHORUS

16 2.
A A^{sus} A D F#m E A/C#

- sus' Name. _ Christ a - lone. Corn - er - stone. Weak made

20 D F#m E A D F#m E

strong in the Sav - iour's love. _ Through the storm, He is Lord. Lord of

VERSE 2 & 3

24 A A

all. 2. When dark - ness seems to
3. When He shall come with

27 D E

hide His face, I rest on His un - chang - ing grace. _
trump - et sound, oh may I then in Him be found. _

30 F#m F#m/E D E 2nd time to Coda ⊕

In ev - 'ry high and storm - y gale, my an - chor holds with - in ____
Dressed in His right - eous - ness a - lone. Fault - less stand be - fore

33 A D E A

_ the veil. _ My an - chor holds with - in ____ the veil. _ Christ a -

CHORUS

37 D F#m E A/C# D F#m E A

-lone. Corn - er - stone. Weak made strong in the Sav - iour's love. — Through the

INTERLUDE

41 D F#m E A

storm, He is Lord. Lord of all. He is —

45 F#m D E A/C#

Lord. — Lord of all. — Christ a -

49 E A

Lord. Lord of all. Christ a - Lord. Lord of all.

54 D.S. al Coda

⊕ Coda
A

57

— the throne. —

Speak O Lord

Words and Music by
Keith Getty and Stuart Townend

VERSE

F/A G/B C²

F

C

F

C

1. Speak, O Lord, as we come to You to re - ceive the food of Your
 2. Teach us Lord full o - be - di - ence, ho - ly rev - er - ence, true hu -
 3. Speak, O Lord, and re - new our minds; Help us grasp the heights of Your

4 Am

G/B

F/A

G/B

C²

F

C

ho - ly word. Take Your truth, plant it deep in us; Shape and
 - mil - i - ty. Test our thoughts and our at - ti - tudes in the
 plans for us. Truths un - changed from the dawn of time, that will

7

F

C/E

F

G

C

C/E

G

G/F

C/E

fash - ion us in Your like - ness, that the light of Christ might be
 ra - di - ance of Your pu - ri - ty. Cause our faith to rise, cause our
 e - cho down through e - ter - ni - ty. And by grace we'll stand on Your

CCLI Song # 4615235

© 2005 Thankyou Music

For use solely with the SongSelect® Terms of Use. All rights reserved. www.ccli.com

CCLI License # 153437

10 G^{sus}/F G^9/F C^2/E G G/F C/E Am G^{sus} G F/A G/B C^2

seen to-day in our acts of love and our deeds of faith. Speak, O Lord, and ful -
 eyes to see Your ma - jes - tic love and au - thor - i - ty. Words of pow'r that can
 prom - is-es; And by faith we'll walk as You walk with us. Speak, O Lord, till Your

14 F C F C/E F G^{sus} G C

-fill in us all Your pur - pos - es, for Your glo - ry.
 nev - er fail; Let their truth pre-vail o - ver un - be - lief.
 church is built and the earth is filled with Your glo - ry.

17 F^2 C^2/E F^2 G^{sus} G C

Christ Our Hope In Life And Death

(based on the recording by Keith & Kristyn Getty)

Words and Music by
Keith Getty, Matt Boswell, Jordan Kauflin,
and Matthew Merker, Matt Papa

♩ = 76

INTRO

D⁵

G²(no3)

Musical notation for the Intro section, measures 1-3. Treble and bass staves in D major, 3/4 time. Chords D⁵ and G²(no3) are indicated above the staves.

§

VERSE 1 & 2

4

D

D^{sus}

D

D^{sus}

D

Bm⁷
(2nd Verse)

A⁽⁴⁾

A^{sus}

1. What is our hope in life and death? Christ a - lone, Christ a - lone. What is our
(2. What truth can) calm the trou - bled soul? God is good, God is good. Where is His

9

D

A/C#

Bm

G

D/A

A

D

on - ly con - fi - dence? That our souls to Him be - long. Who holds our
grace and good - ness known? In our great Re - deem - er's blood. Who holds our

CCLI Song # 7147502

© 2020 Getty Music Hymns and Songs | Getty Music Publishing | Jordan Kauflin Music | Love Your Enemies Publishing | Matthew Merker Music
| Messenger Hymns

For use solely with the SongSelect® Terms of Use. All rights reserved. www.ccli.com

CCLI License # 153437

13 F#m Bm Em⁷ D/F#

days with - in His hand? What comes, a - part from His com -
 faith when fears a - rise? Who stands a - bove the storm - y

16 G D/A A Bm G

-mand? And what will keep us to the end? The love of
 trial? Who sends the waves that bring us night the un - to the

19 D/A A D D^{sus} D Bm G D

2nd time to Coda ⊕ CHORUS 1a

Christ, in which we stand. O sing ha - le - lu - jah! Our
 shore, the rock of

24 A/C# Bm D/F# G D/F# G D/F# A

hope springs e - ter - nal; O sing ha - le - lu - jah! Now and ev - er we con -

29 TURNAROUND

G Bm⁷ A D⁵

-fess Christ our hope in life and death.

32 G²(no3) D.S. al Coda

What truth can

35 CHORUS 1b

⊕ Coda D Bm G D A/C# A Bm D/F#

Christ? O sing ha - le - lu - jah! Our hope springs e - ter - nal; O

40 G D/F# G D/F# A G Bm⁷ A

sing ha - le - lu - jah! Now and ev - er we con - fess Christ our hope in life and

TURNAROUND

45 D^5 $G^2(no3)$

death. Un - to the

VERSE 3

49 D D^{sus} D D^{sus} D $A^{(4)}$ A^{sus} D $A/C\sharp$

grave, what will we sing? "Christ, He lives; Christ, He lives!" And what re - ward will heav - en

54 Bm G D/A A D $F\sharp m$ Bm

bring? Ev - er - last - ing life with Him. There we will rise to meet the Lord, Then sin and

59 Em^7 $D/F\sharp$ G D/A $A\sharp^\circ$ Bm G D/A A

death will be de - stroyed, And we will feast in end - less joy, When Christ is ours for - ev - er -

CHORUS 1c

64 D D/C# Bm Bm/A N.C. D A/C# A

-more. O sing ha - le - lu - jah! Our hope springs e -

69 Bm D/F# G D/F# G D/F# A G

-ter - nal; O sing ha - le - lu - jah! Now and ev - er we con - fess Christ our

CHORUS 1d

74 Bm⁷ A D D/C# Bm Bm/A G D D/E D/F#

hope in life and death. O sing ha - le - lu - jah! Our

78 A A/B A/C# Bm D/F# G D/F# G D/F# A

hope springs e - ter - nal; O sing ha - le - lu - jah! Now and ev - er we con -

TAG

83

G

Bm⁷

A

G^{2(no3)}

D/A

D/F[#]

-fess Christ our hope in life and death. Now and ev - er we con -

87

G

Bm⁷

A

D

D^{sus}

D

-fess Christ our hope in life and death.